



BOWERING HOMES, INC.

BUILDERS AND DEVELOPERS

1303 Marsh Road | Pittsford NY 14534 | 585.381.3376

7969 Bramwell Park | Lot 3 Bramwell Park

FACTS:

Size: 1,540 sqft first floor
1,430 sqft second floor
2,970 sqft Total living area

Lot size: 1.2 acres

Bedrooms: 4

Bathrooms: 2 Full and ½

Garage: 2 car front plus 8'x12' storage

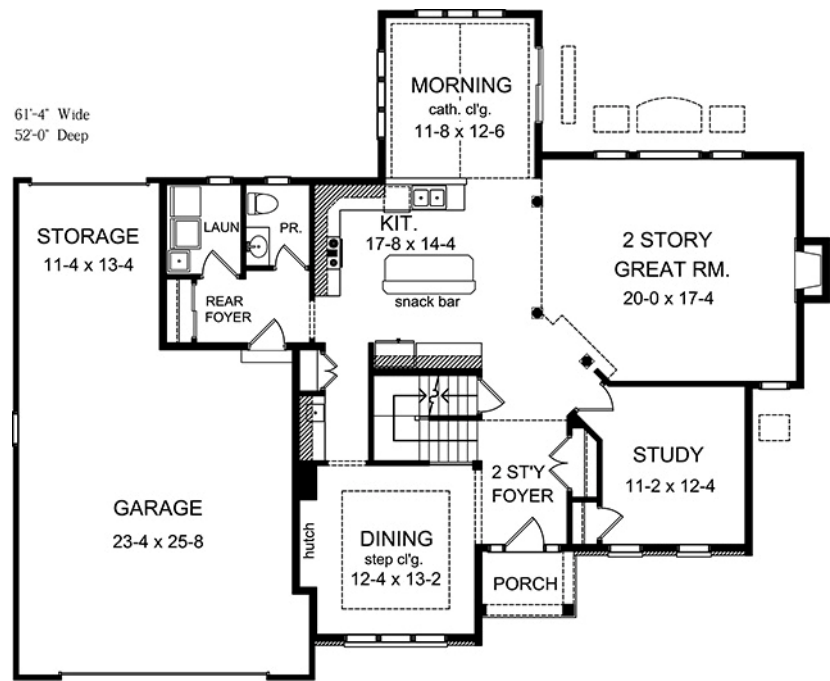
Occupancy: Sold – fall 2007



FEATURES:

- The perfect family home for today's casual lifestyle! – Large great room/no formal living room
- Quiet cul de sac setting; includes access to private 1 acre cul de sac neighborhood park
- Surrounded by woods
- Convenient setting offers rural feel yet only minutes from Mall, shopping and Xways
- Stunning stone façade with architectural roof system
- Classic cherry kitchen with granite counter tops and of the line GE Monogram appliance package
- Breakfast area morning room with tall ceiling
- Butler's pantry walkthrough to dining room
- High ceilings abound, transom glass throughout
- Stunning master suite with his/hers walk in closets, jetted tub
- Laminated shelving system
- 3 spacious non master bedrooms up share a full bath
- Top of the line ANDERSEN, KOHLER, TRANE, GE, OWENS CORNING branding throughout
- Professionally landscaped with blacktop drive

FLOORPLANS:



FIRST FLOOR PLAN

SCALE: 1/4" = 1'-0"
Living Area = 1540 Sq. Ft.
9'-0" Ceiling Height



SECOND FLOOR PLAN

SCALE: 1/4" = 1'-0"
Living Area = 1430Sq. Ft.